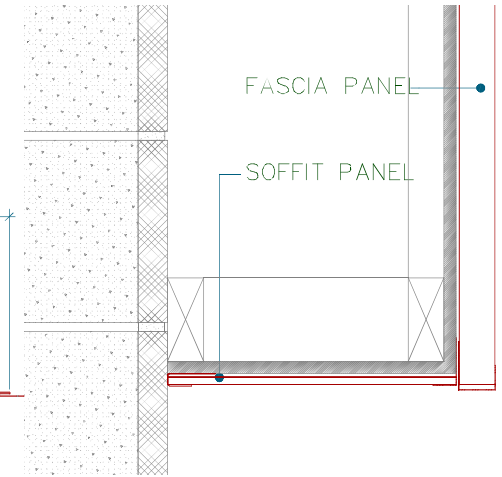
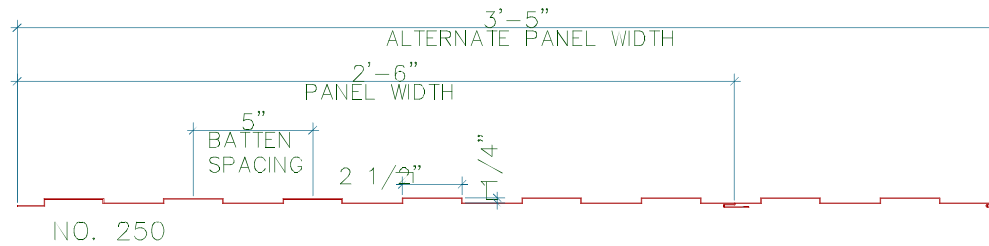


PRIMARY OPTIONS:

METAL: -----
 GAUGE: -----
 COLOR: -----

OTHER OPTIONS:

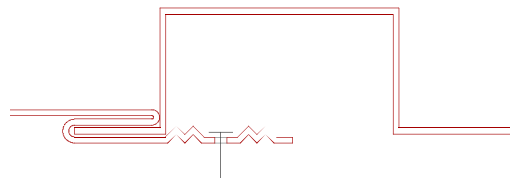
MITERS: -----
 CORNERS: -----
 HIPS: -----
 VALLEYS: -----
 RIDGES: -----
 TOP CHANNEL: -----
 BOTTOM CHANNEL: -----



TYPICAL SYSTEM INSTALLATION

GENERAL NOTES:

1. ALL COMPONENTS ARE CUSTOM DESIGNED BY CHENEY FLASHING; SECTION DRAWING IS FOR REFERENCE ONLY.
2. PANEL WIDTHS VARY BETWEEN 2'-6" AND 3'-0".
3. ALL DIMENSIONS AND DETAILS MUST BE COORDINATED AND APPROVED BY CONTRACTOR PRIOR TO FABRICATION.
4. FOR ACCESSORIES AND RELATED PRODUCTS TO COMPLETE SYSTEM, CONTACT CHENEY FLASHING.
5. MAXIMUM 10'-0" PANEL LENGTH.
6. SYSTEM CAN ALSO BE USED AS FASCIA.



FLANGE DETAIL

BATTEN SPACING:	BATTEN HEIGHT:	BATTEN WIDTH:	PANEL WIDTH:	PANEL NO.:	DRIP HEM: N/A	LENGTH:
CUSTOMER:	PROJECT:	LOCATION:	DATE:	SCALE: NONE	QUANTITY:	

CHENEY FLASHING, LLC

12100 BALTIMORE AVE
 SUITE 4
 BELTSVILLE, MD 20705

PHONE: 301-931-2556
 FAX: 301-931-2559
 EMAIL: info@cheneyflashing.com

**NO. 250 SYSTEM
 FASCIA/SOFFIT PANEL**

DIMENSIONS NOT TO SCALE. PLEASE CONTACT CHENEY FLASHING COMPANY TO PREPARE A FORMAL PROPOSAL WITH FULLY DETAILED DRAWINGS, PRICING, AND TERMS. © CHENEY FLASHING COMPANY



FP-2